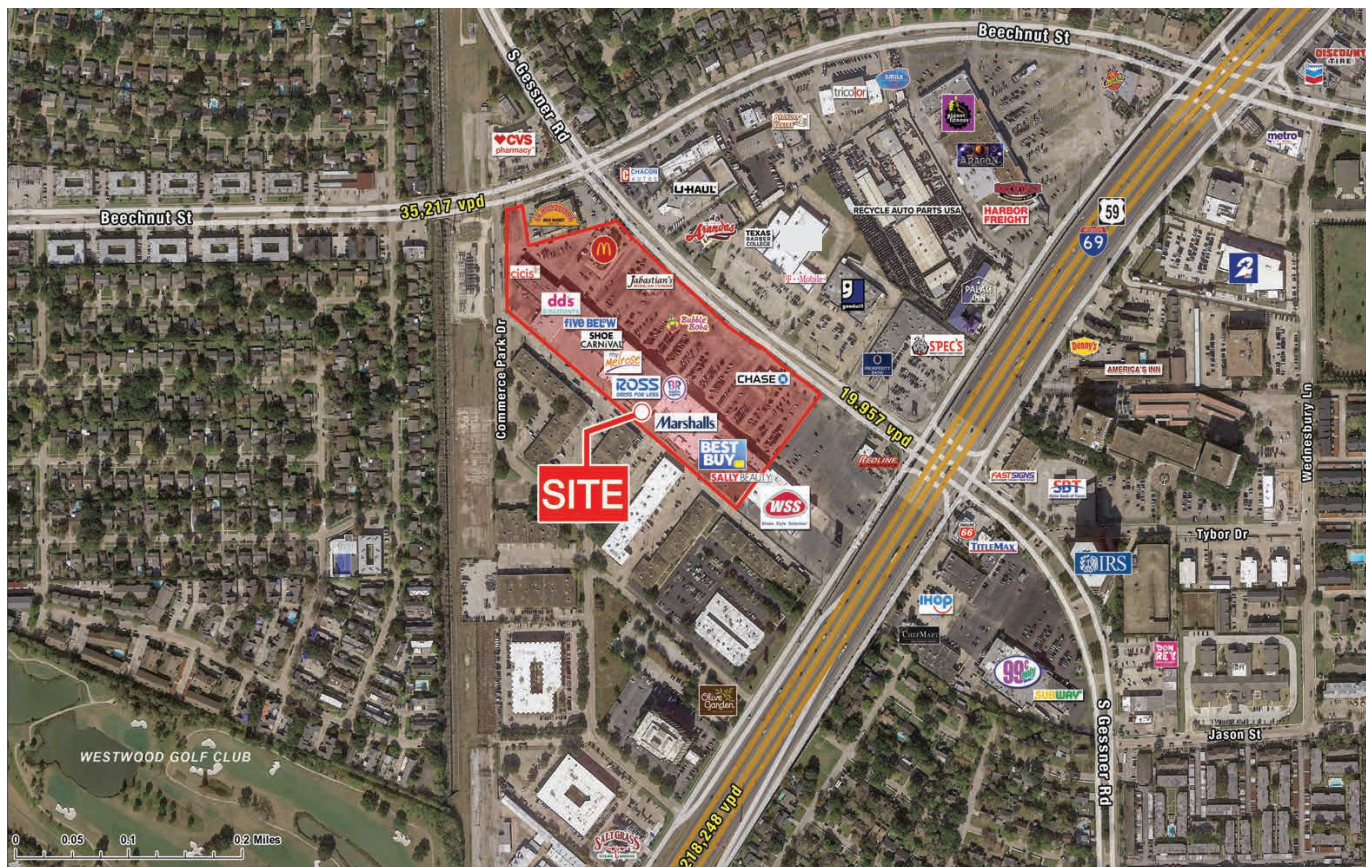


SOUTHWAY SHOPPING CENTER

8000-8230 SOUTH GESSNER DRIVE, HOUSTON, TX



► PROPERTY DETAILS

Total Square Footage: 181,836 SF

► PROPERTY DESCRIPTION

- Established Power Center in Sharpstown
- National anchor lineup to feed small shop traffic
- Excellent visibility and access from US-59
- Accessible via Gessner, Beechnut and US-59
- Hard corner with signalized intersection and freeway frontage

► DEMOGRAPHICS

	1 Mile	5 Miles	10 Miles
Total Population	229,650	572,411	1,579,824
Average Household Income	\$54,517	\$70,231	\$97,055
2024 Households	83,225	218,909	620,854

► TENANTS



Marshalls

ROSS



five BELOW

SOUTHWAY SHOPPING CENTER

8000-8230 SOUTH GESSNER DRIVE, HOUSTON, TX

