

# COVENTRY CROSSING

2250, 2300-2380 NEW LONDON TURNPIKE, COVENTRY, RI



## ▶ PROPERTY DETAILS

Total Square Footage: 20,796

## ▶ PROPERTY DESCRIPTION

This 20,796-square-foot shopping center is located in Coventry, RI. Coventry is a suburb of Providence and had a population of 35,000 residents as of the 2010 census.

Coventry Crossing shopping center is located near popular retail destinations like Walmart and The Home Depot, along with two large chain hotels.

The largest employers in Providence include, Brown University, the Rhode Island Hospital and Life Span.

Coventry Crossing is located at the busy intersection of New London Turnpike and Interstate 95.

100% leased.

## ▶ DEMOGRAPHICS

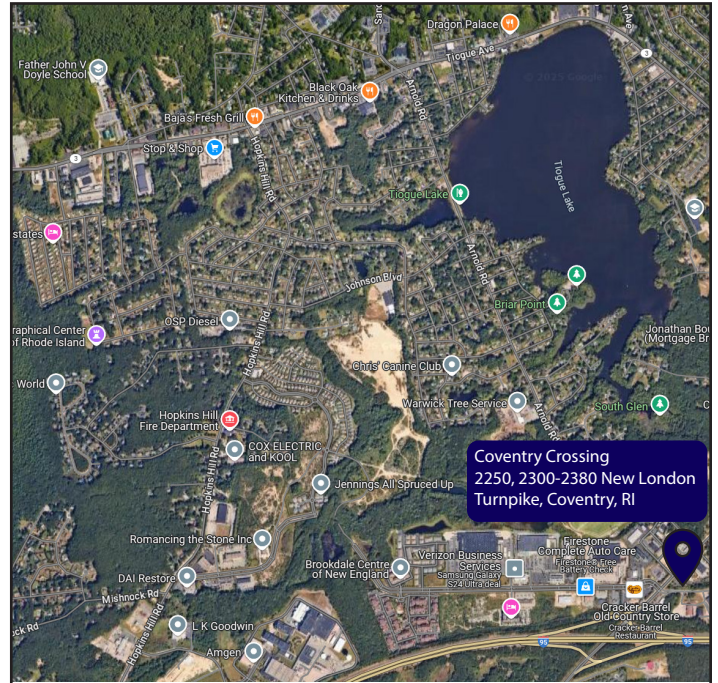
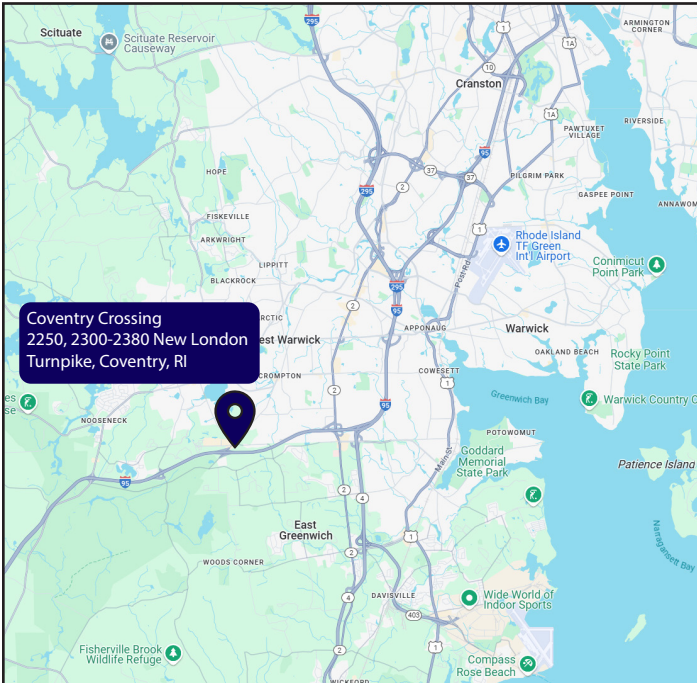
	3 Miles	5 Miles	10 Miles
Total Population	43,007	94,744	265,762
Average Household Income	\$98,890	\$107,155	\$106,579
2024 Households	18,125	39,986	109,865

## ▶ TENANTS



# COVENTRY CROSSING

2250, 2300-2380 NEW LONDON TURNPIKE, COVENTRY, RI



1	CVS Pharmacy	12,900 SF	4	Available	1,069 SF
2	Tropical Smoothie Cafe	2,400 SF	5	Encore Nail & Spa	1,427 SF
3	Webster Bank	3,000 SF			