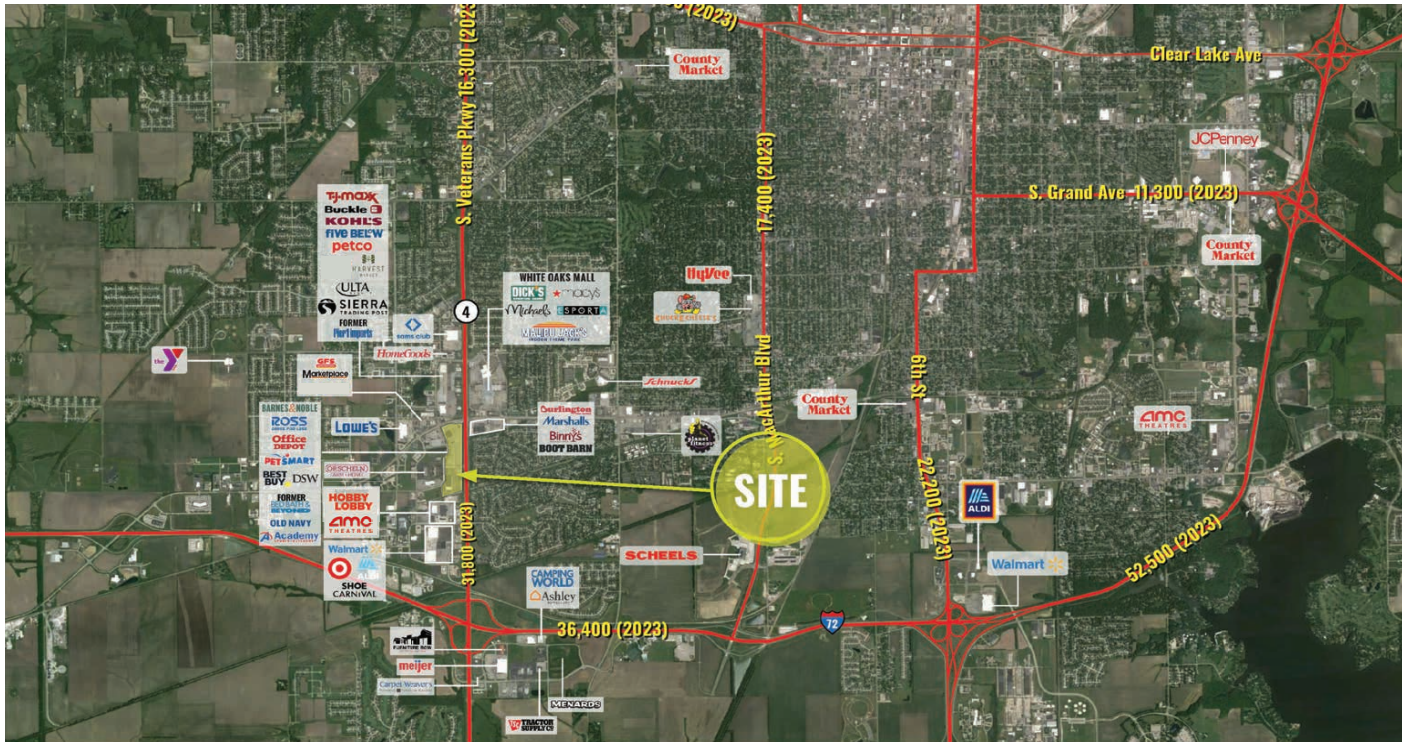


# SOUTHWEST PLAZA

3100-3261 S VETERANS PKWY, SPRINGFIELD, IL



## PROPERTY DETAILS

Total Square Footage: 367,867

## PROPERTY DESCRIPTION

- This is a 367,867-square-foot shopping center anchored by Gordmans, Best Buy and Sports Authority.
- Located in Springfield, a dense residential area near University of Illinois and White Oaks Mall.
- Situated along Veterans Parkway which has an estimated traffic count of more than 33,500 vehicles daily.\*\*
- Major employers in the area included the Memorial Health System, St. John's Hospital and the Illinois National Guard.

\*\*Source:IDOT.

## DEMOGRAPHICS

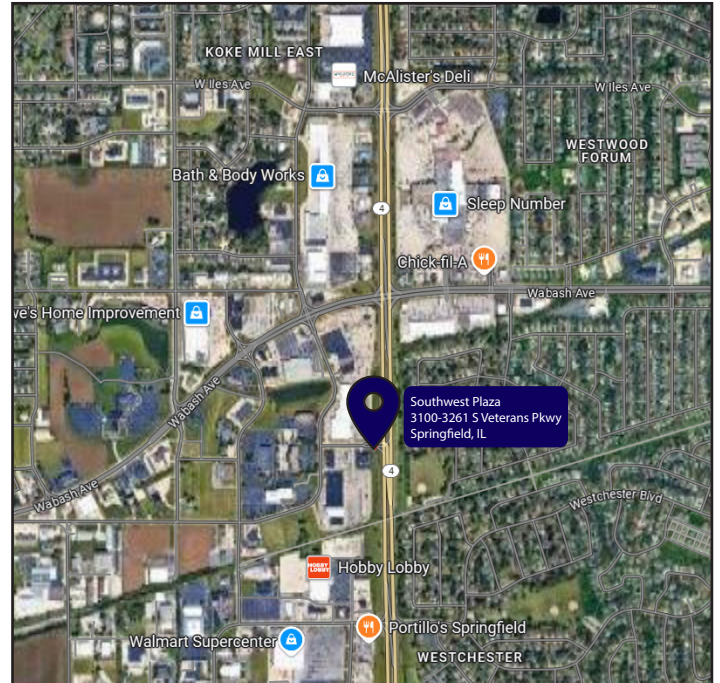
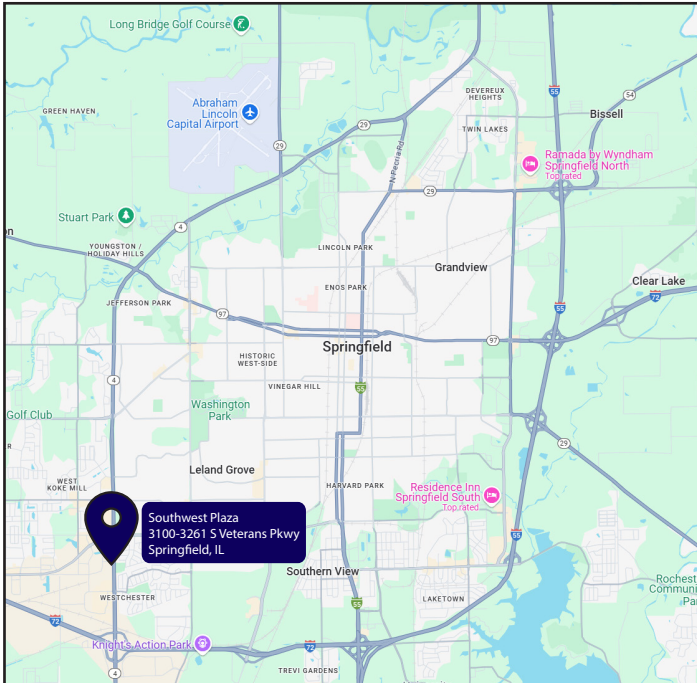
	3 Miles	5 Miles	10 Miles
Total Population	44,001	101,326	163,369
Average Household Income	\$100,714	\$83,343	\$85,708
2024 Households	20,394	45,891	71,280

## TENANTS



# SOUTHWEST PLAZA

3100-3261 S VETERANS PKWY, SPRINGFIELD, IL



TENANT	SF	TENANT	SF	TENANT	SF
1 OLD NAVY	14,408	9 AVAILABLE	9,000	17 ROSS	22,000
2 AVAILABLE	21,944	10 BEST BUY	58,000	18 OFFICE DEPOT	17,320
3 ACADEMY SPORTS	58,000	11 PETSMART	19,822	19 AVAILABLE	18,486
4 AVAILABLE	25,095	12 DSW	16,065	20 BARNES & NOBLE	37,196
5 AT&T	2,538	13 AVAILABLE	11,273	21 RAISING CANE'S	
6 AMERICA'S BEST	3,000	14 DOLLAR TREE	9,257	22 ARBY'S	
7 AVAILABLE	2,776	15 US ARMY	4,000		
8 LUXE NAIL BAR	3,049	16 MENS WEARHOUSE	4,000		