

MUNDELEIN CROSSING

3010 IL-60, MUNDELEIN, IL 60060



▶ PROPERTY DETAILS

Total Square Footage: 146,702 SF

▶ PROPERTY DESCRIPTION

Mundelein Crossing Plaza is a 146,702 SF regional shopping center located in Mundelein, IL. The Center is anchored by TJ Maxx, Dollar Tree, Five Below, and Dollar Tree.

Mundelein Crossing is strategically positioned along IL-60 benefits from Target and Home Depot as its shadow anchors. The immediate trade area is supported by affluent demographics (3-Mile Avg. HHl ~\$130K+ / Population ~30K) and continued residential expansion, including hundreds of recently delivered townhomes and additional planned developments.

▶ DEMOGRAPHICS

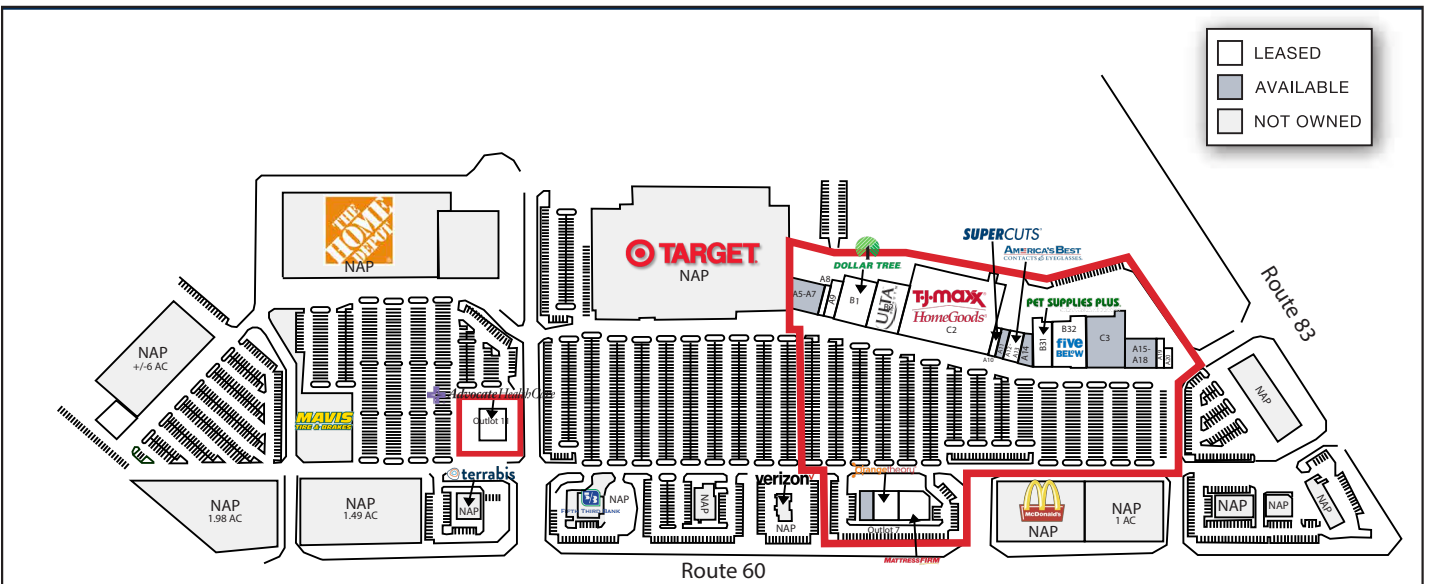
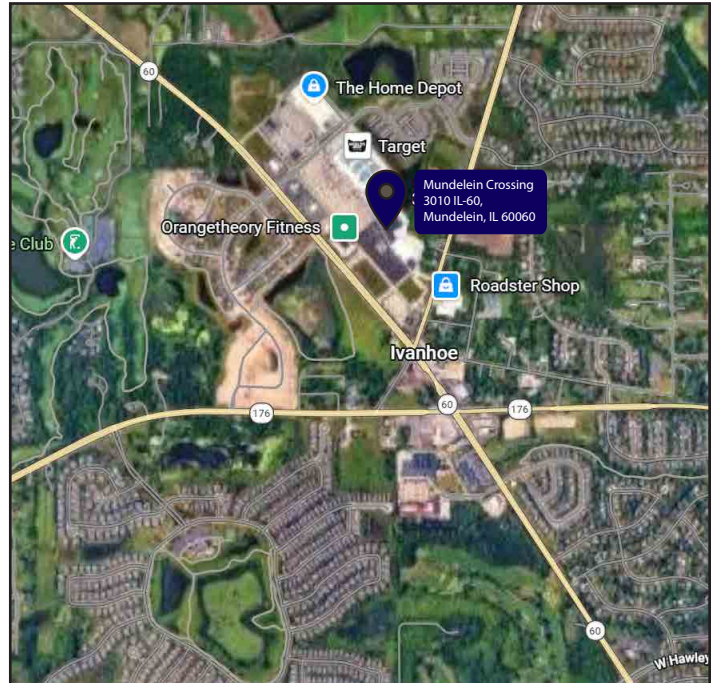
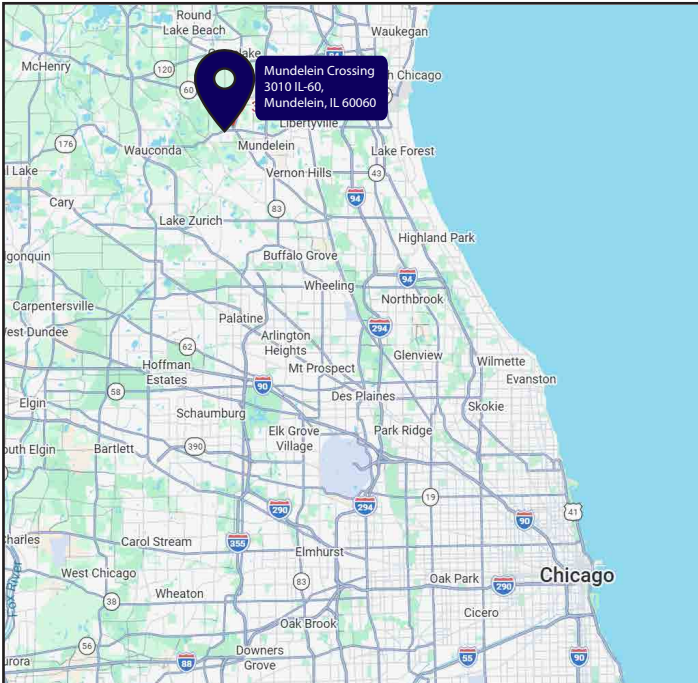
	3 Miles	5 Miles	10 Miles
Total Population	31,893	118,796	487,584
Average Household Income	\$134,548	\$145,740	\$144,413
2025 Households	11,758	43,470	176,435

▶ TENANTS



MUNDELEIN CROSSING

3010 IL-60, MUNDELEIN, IL 60060



TENANT ROSTER		
SUITE	TENANT	SIZE
A5-A7	Available	6,789
A8	Paris Nails	1,200
A9	Dental Smile	2,983
B1	Dollar Tree	10,155
B2	Ulta	11,605
C2	T.J.Maxx / HomeGoods	48,007
A10	Super Cuts	1,233
A11	Available	1,600
A12-A13	America's Best (Coming Soon)	3,200
A14	Available	2,575
B31	Pet Supplies Plus	7,380
B32	Five Below	11,231
C3	Available	13,606
A15-A18	Available	6,437
A19	Jimano's Pizza	1,618
A20	Luxe Cleaners	1,128

TENANT ROSTER		
SUITE	TENANT	SIZE
Outlot 7	Available	2,500
Outlot 7	Orange Theory	3,175
Outlot 7	Mattress Firm	4,854
Outlot 11	Advocate Health Care	8,000