

# 257 KING STREET

CHARLESTON, SC



# 257 KING STREET

257-261 King Street is a two story brick building with floor to ceiling store front windows and multiple double doors located on the iconic King Street. The front of the property has a grand marquee which provides additional visibility, lighting, and signage for the property.

257-261 also has one of the largest frontages of any property on King at +/-70 feet as well as 11 ½ ft ceiling heights. The property has rear access for parking and deliveries through an alley off Beaufain St.





# ADDRESS

257 KING ST  
CHARLESTON, SC 29401

# SQUARE FEET

+/- 28,000  
GROUND FLOOR- 16,000 SF  
SECOND FLOOR- 12,000 SF

# FRONTAGE

+/- 70 FEET

# CEILING HEIGHTS

+/- 11 FEET

# LEASE TERMS

NEGOTIABLE

# AVAILABLE

JANUARY 2025

# PARKING SPACES

15 SPACES



The property is strategically located in the high-end ‘cobblestone’ shopping district of the 200 block of King Street and is one block north of The Belmont Charleston Place Hotel and Shops. Other nearby retailers include, Louis Vuitton, Club Monaco, J Crew, Anthropologie, Lilly Pulitzer, Apple, Lululemon, H&M, and more. 257-261 King is flanked on both sides of the street by hotels. The College of Charleston and Marion Square are just a few blocks away. The central downtown location allows for high foot traffic and visibility for tourists and residents alike, with a walk score of 97.

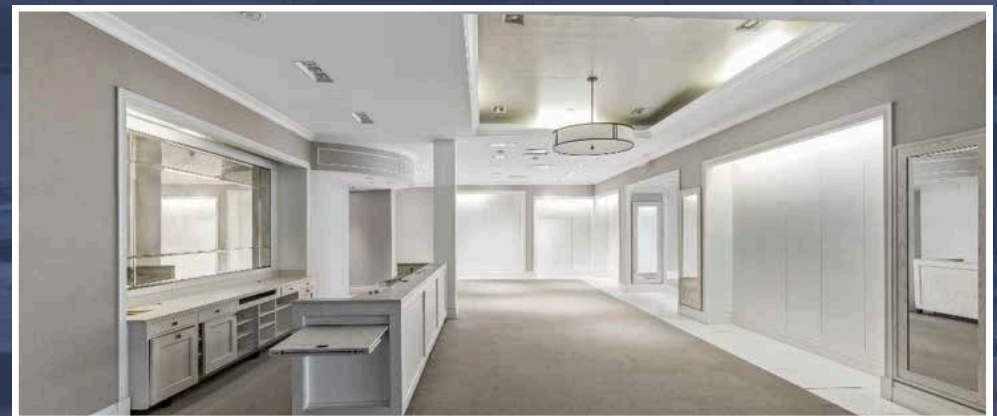
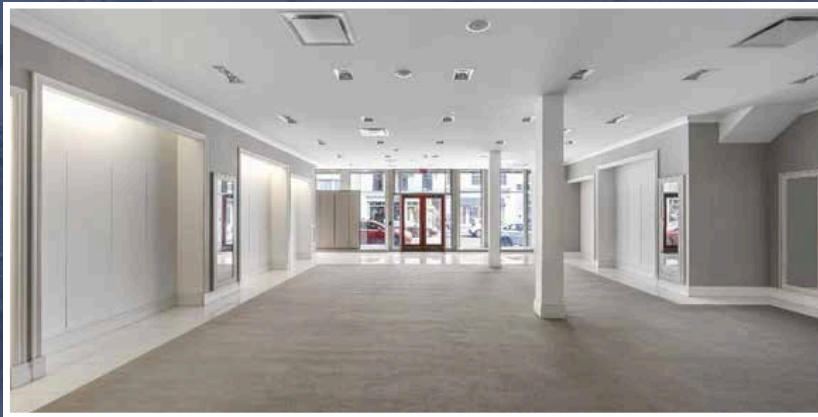




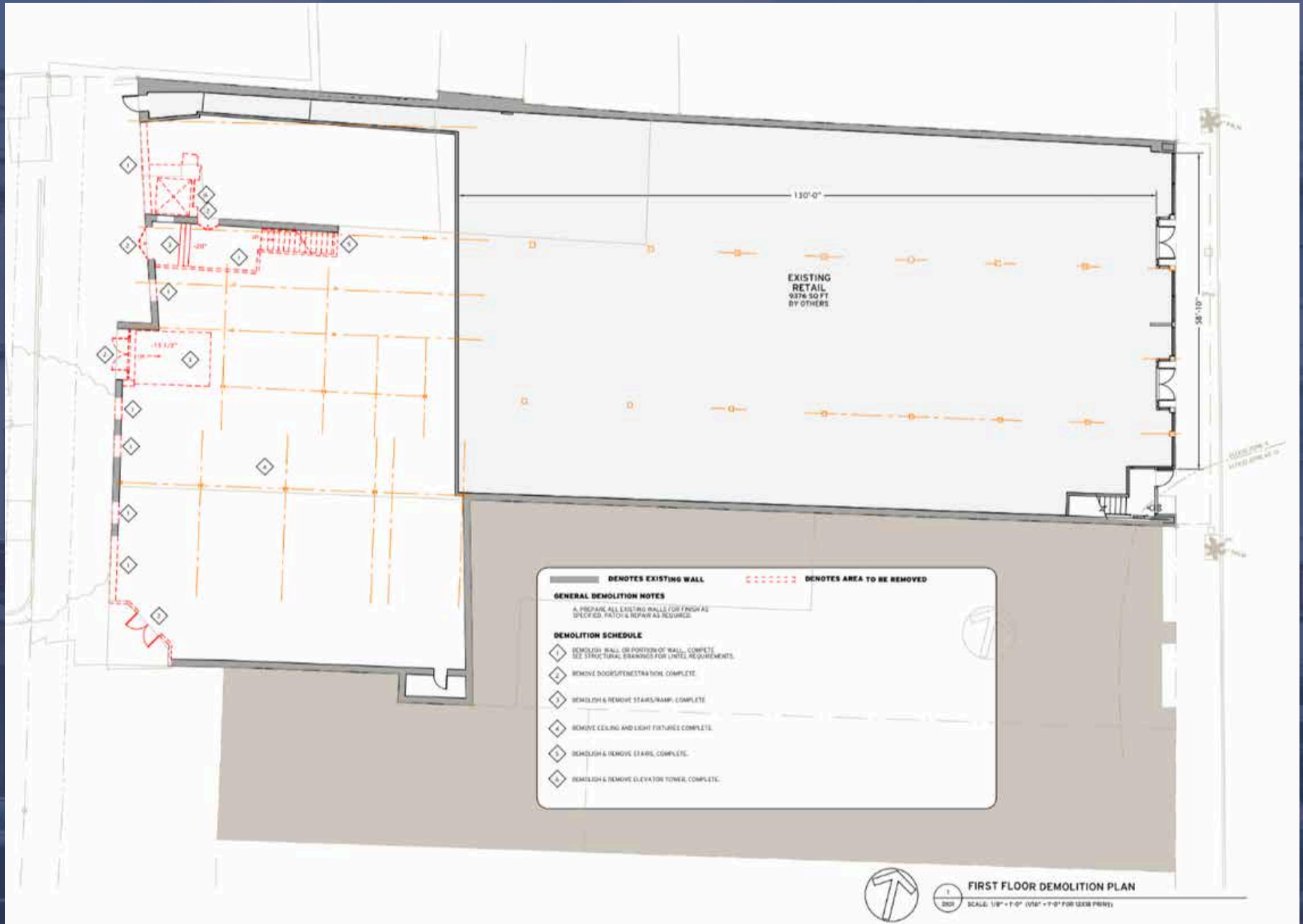
# GROUND FLOOR PLAN:

16,000 SF (10,000 SF CURRENTLY OCCUPIED)

Available for lease is 257-261 King Street. The existing retail space features floor to ceiling storefront windows, high ceilings, and has +/-70 feet of frontage on King Street. The space is currently occupied by the women's apparel company, Gretchen Scott Designs. Their retail space consists of 10,000 SF. The total square footage of the building consists of 28,000 SF (ground floor- 16,000 SF and second floor- 12,000 SF).



# GROUND FLOOR: FLOOR PLAN



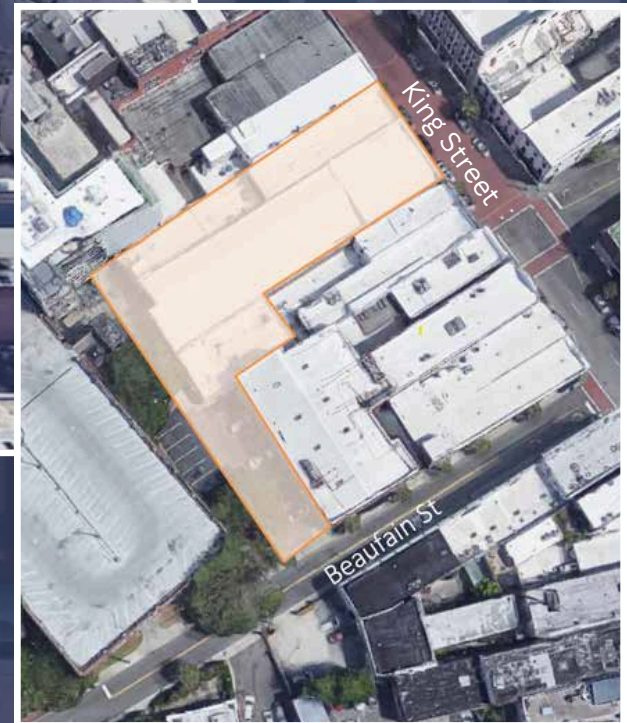
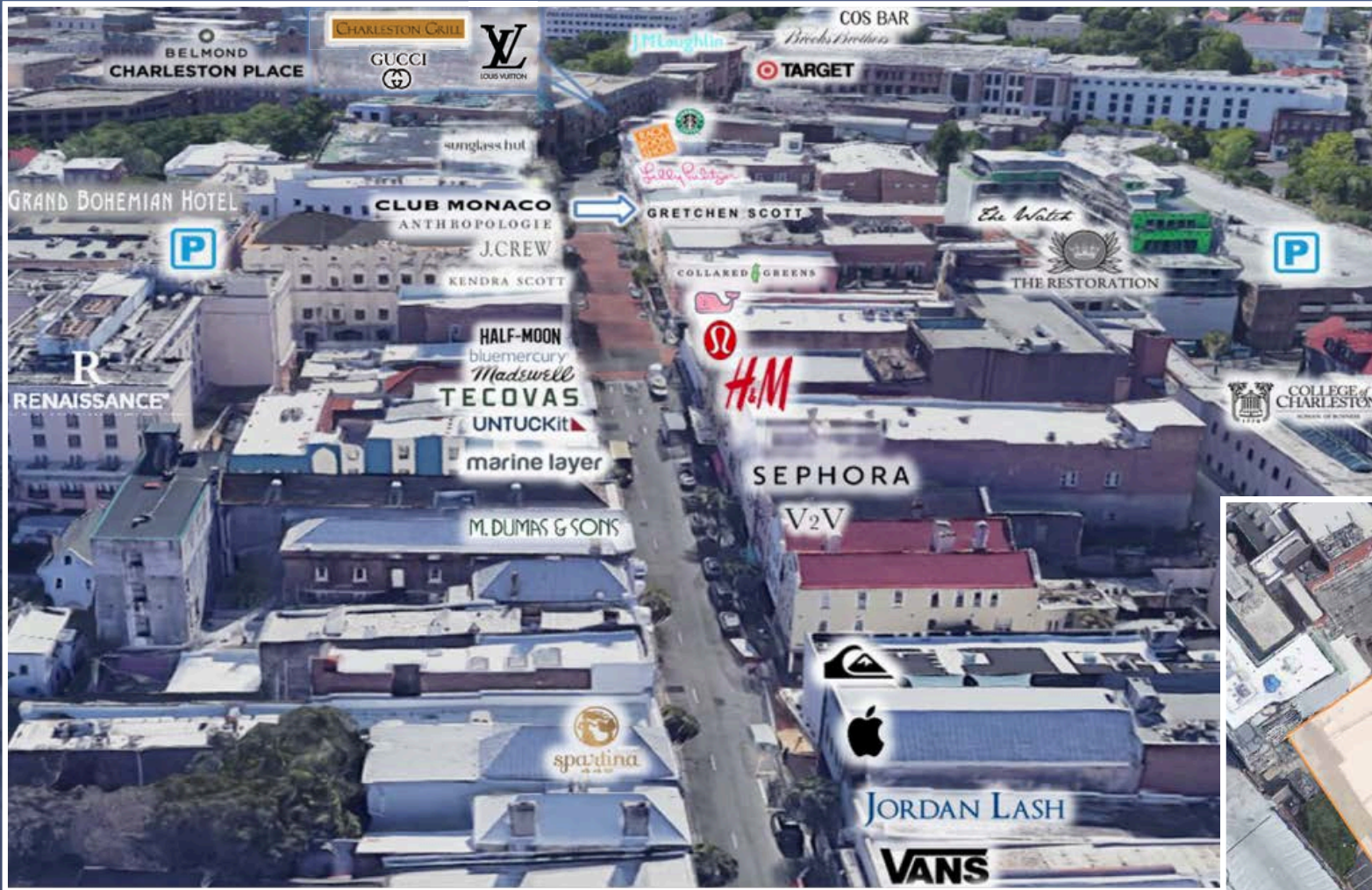


# TRADE AREA





# TRADE AREA





# SURROUNDING MARKET

**257 King St**

**Surrounding Market:**

- Top Left:** CHARLEIGH HYATT house, GREYSTAR, The Post and Courier
- Middle Left:** MUSC MEDICAL UNIVERSITY of SOUTH CAROLINA, Walgreens
- Bottom Left:** COLLEGE of CHARLESTON, CVS pharmacy
- Bottom Left (Retail):** Walgreens, CHIPOTLE, POTTERY BARN, WILLIAMS-SONOMA, GUCCI, LV, Apple, H&M, FAHERTY, ANTHROPOLOGIE, Tommy Bahama, Starbucks, Rack Room Shoes, Coppin Group, lululemon, athletica, vineyard vines, VANS, chubbies, J.CREW
- Top Right:** Arthur Ravenel Bridge
- Middle Right:** WARBY PARKER, free people, west elm, Halls CROPHOUSE, Too Campbell, The Ordinary, INK&IVY, DARLING, HYATT house, MUSIC FARM COAST
- Bottom Right:** Marion Square, Charleston Port, Historic Charleston Market, Battery Park



# KING STREET, CHARLESTON

Located in the epicenter of "The Best City in the U.S.", 257 King's central location is in walking distance of everything downtown, including shopping, restaurants, hotels, schools, attractions, parks and employers. King Street is home to over 200 businesses along a 2-mile stretch.

Additionally, the property is situated a few blocks from Marion Square, a beautiful 10-acre park that plays host to frequent events. Tens of thousands of visitors are regularly drawn by these events which include, Charleston Farmer's Market, Piccolo Spoleto Arts Festival, Charleston Wine & Food Festival, Charleston Fashion Week, Southeastern Wildlife Festival, Cooper River Bridge Run, and Second Sunday, among others.



**COLLEGE OF  
CHARLESTON**  
TOTAL  
ENROLLMENT:  
**11,729**

**11.6M**  
**VISITORS**  
TO KING STREET  
IN 2023  
(Per Placer.AI)





# FOR MORE INFORMATION PLEASE CONTACT:

## **KEVIN DONEGAN**

VICE PRESIDENT- LEASING AND  
NATIONAL ACCOUNTS

(O) 404.665.1126

(C) 770.355.2511

KEVIND@RCGVENTURES.COM

## **SHANE BROWNLEE**

SENIOR LEASING ASSOCIATE

(O) 404.665.1143

(C) 706.575.2869

SHANEB@RCGVENTURES.COM